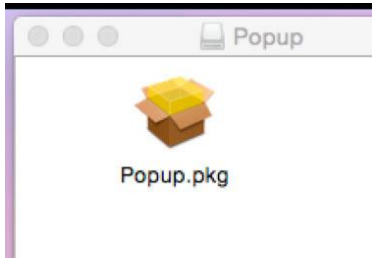
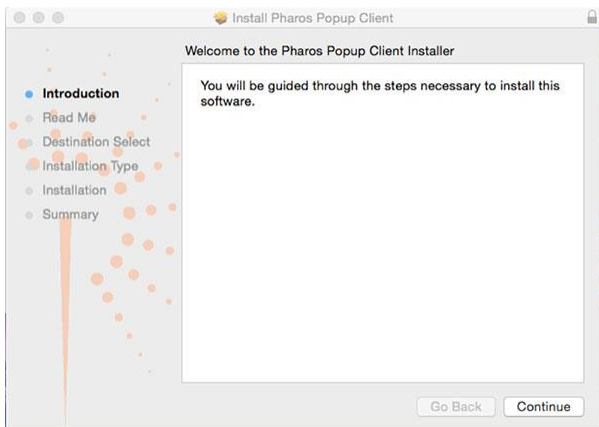


Mac Operating System Download and Installation Instructions

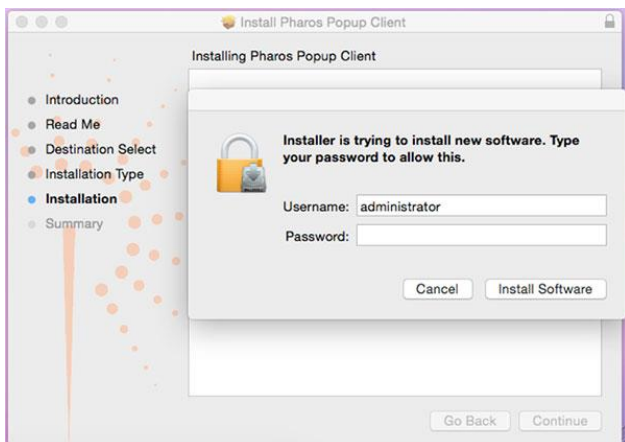
1. Click on the **OneCard Print Driver or Guest Card Print Driver** links at: <http://onecard.wayne.edu/printing-copying.php/>. Black and White drivers must be downloaded separately from the color drivers.
2. Double click on the Popup.pkg file.



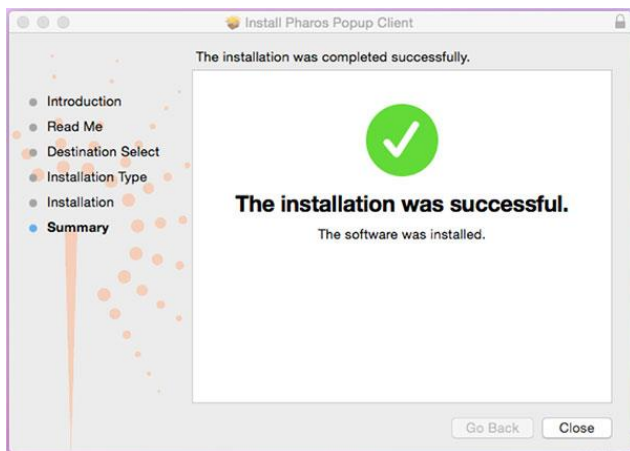
3. Follow the prompts to initiate the installation process.



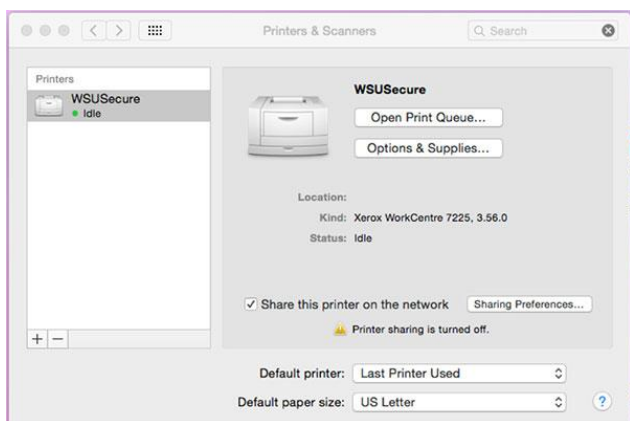
4. You may be prompted to authenticate the installation with your computer password.



5. The installation will finalize.



6. Open the Printers and Scanners from the System Preferences and double click on the WSUSecure or WSUGuest Printer in your Print Queue.

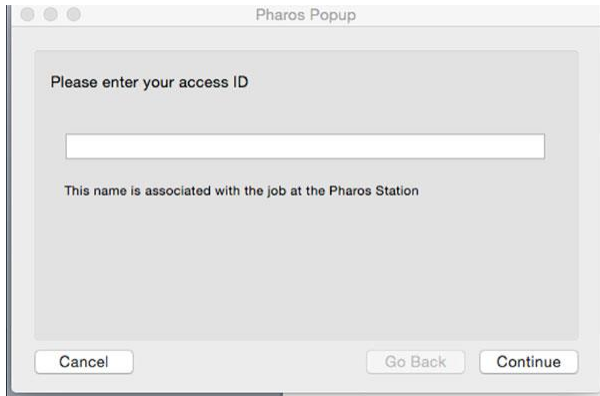


7. You may be prompted to install additional components to the printer. Click Install.



8. Repeat steps 1-7 to install and configure all of the print drivers you wish to have on your laptop.

9. Once the printers are configured, proceed with printing your documents to the appropriate queue (color or black and whites).



A screenshot of a macOS-style dialog box titled "Pharos Popup". The dialog has a light gray background and a darker gray border. At the top, the title "Pharos Popup" is centered. Below the title, the text "Please enter your access ID" is displayed. Underneath this text is a white rectangular text input field. Below the input field, the text "This name is associated with the job at the Pharos Station" is shown. At the bottom of the dialog, there are three buttons: "Cancel" on the left, "Go Back" in the center, and "Continue" on the right.